

Scale: 1" = 200'
 MSHA Interview Maps
 Based on: UBB - A084
 Received: 4-16-2010
 From: AGM&T
 By: Adron Wilson



WV-800-0918/A314
 1597.01
 Active

47-45-81953
 1746273
 ACTIVE (GPS)

47-45-81953
 1746273
 ACTIVE (GPS)

47-405-00038 (108)
 1772107
 PLUGGED (GPS)

47-405-01169 (108)
 1472844
 PLUGGED (GPS)

OLD No.7
 UNKNOWN

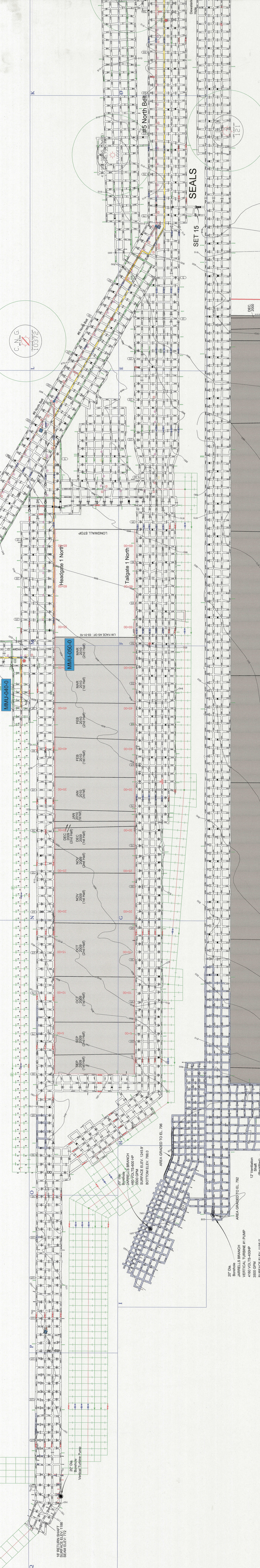
47-405-10973 (2135)
 1772107
 ACTIVE (GPS)

47-405-01169 (108)
 1472844
 PLUGGED (GPS)

C.N.G.
 110372

Glory Hole
 The bottom 20' of the Glory Hole is 20' diameter.
 The top 15' of the Glory Hole is 10' diameter.

Direction Stoppage Blow



SEALS

#5 North Belt

Headgate 1 North

Tailgate 1 North

HEADGATE # 22

20" Dia
 Bonnell's BRANCH
 VERTICAL TURBINE #1 PUMP
 4180 VOLTS-400HP
 3500 GPM
 SURFACE ELEV. 1156.0'
 BOTTOM ELEV. 791.8'

AREA GRACED TO EL. 792

AREA GRACED TO EL. 796

AREA GRACED TO EL. 796

20" Dia
 Vertical Turbine Pump

20" Dia
 Vertical Turbine Pump

20" Dia
 Vertical Turbine Pump

20" Dia
 Vertical Turbine Pump

20" Dia
 Vertical Turbine Pump

20" Dia
 Vertical Turbine Pump

20" Dia
 Vertical Turbine Pump

20" Dia
 Vertical Turbine Pump

20" Dia
 Vertical Turbine Pump

APRIL 2000

MAY 2000

JUNE 2000

JULY 2000

AUGUST 2000

SEPTEMBER 2000

OCT. NOV. 2000

DEC. 2000